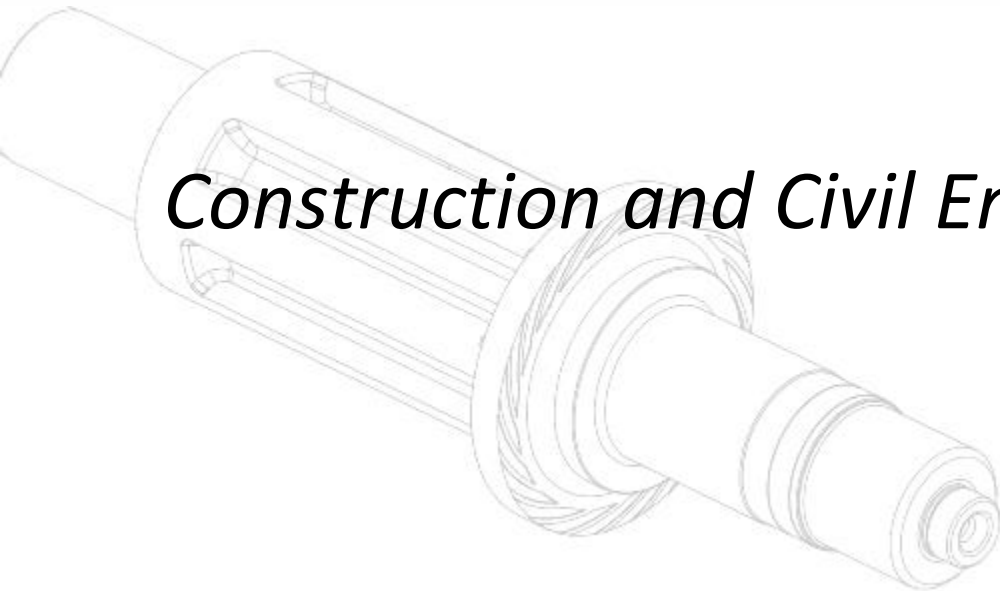
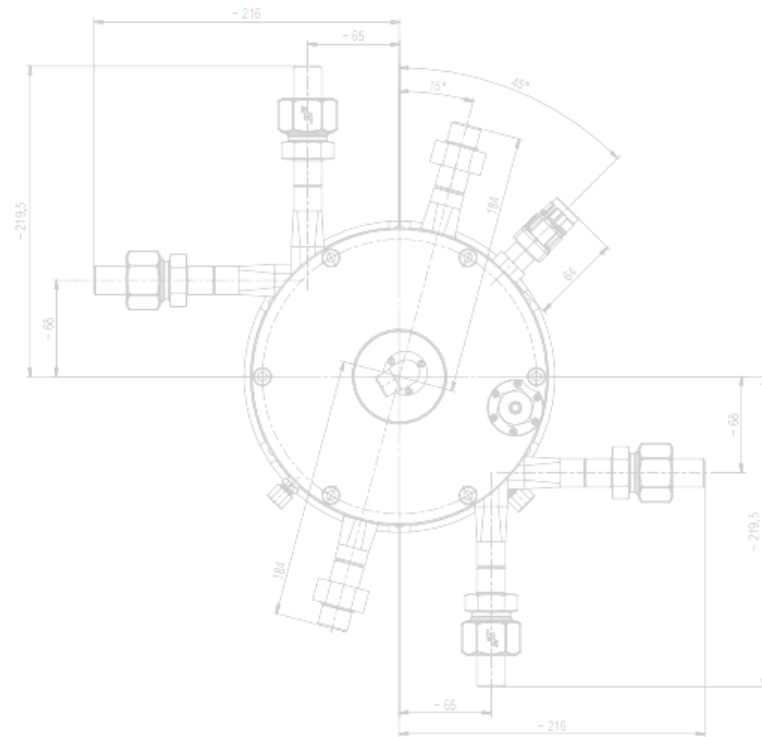


# ATEKO a.s.

1949 – 2020

*Construction and Civil Engineering*



# BU Plant Design & Construction (BU PD & C)

## » Plants for Machinery and Automotive Industry for longstanding partners

» *(Promens Zlín, WIKOV GEAR Plzeň, Kovolis Hedvikov, TMT Chrudim, Ljunghall Čáslav, DGS Druckguss Systeme Liberec etc.)*

## » Plants for Railway Heavy Maintenance and Overhaul Services

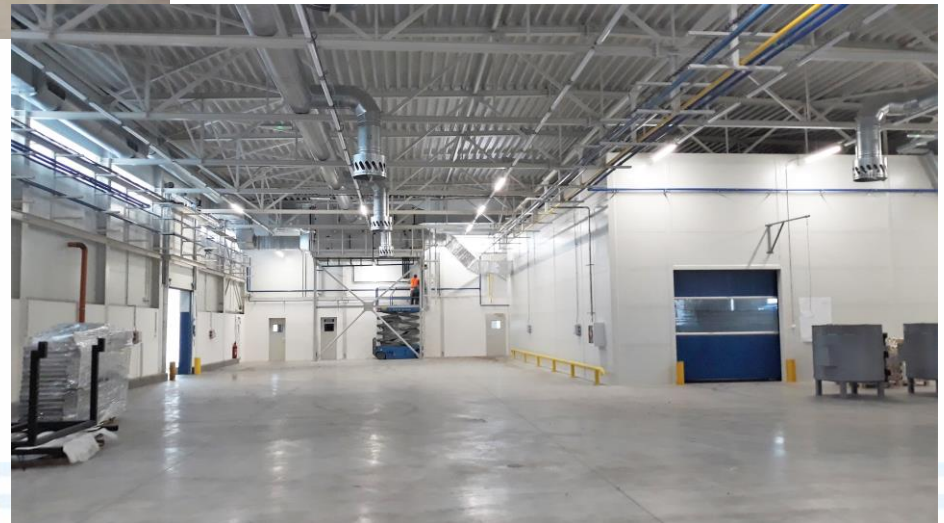
» *(CZ LOKO Česká Třebová, DPOV Nymburk)*

## » Car Retail Showroom

» *(Citroen Hradec Králové)*

## » Ljunghall, Čáslav, CZ

» - continuing development of existing automotive plant – Hall M12, M13



## » LABE WOOD, Štětí, CZ

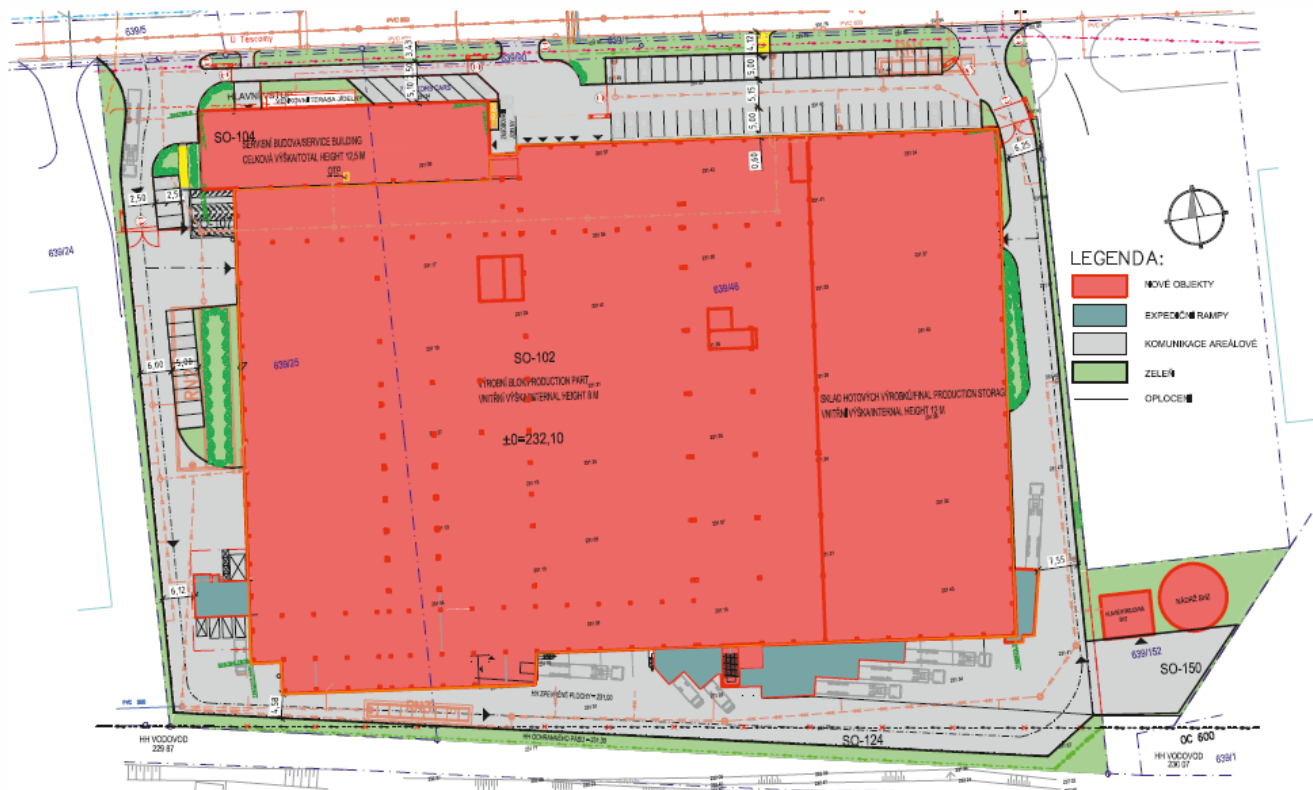
» - a brand new plant for wood processing – project and construction





## » Promens, Zlín, CZ

» - a brand new manufacture plant, workshops, storages and shipping area, offices, transport ways – connection to public network



## » Ljunghall, Čáslav, CZ

» - continuing development and upgrade of existing automotive plant in longstanding cooperation



## » TMT, Chrudim, CZ

- » - *expansion of existing facilities destined for conveyor manufacture*
- » - *a new manufacture hall, offices and energy supply centre, surrounding moving areas, connection to existing facilities*



## » KOVOLIS HEDVIKOV, Hedvikov, CZ

- » - a brand new plant destined for aluminium parts, automotive industry
- » - two machining halls, press shop hall, storage and shipment hall, surrounding moving areas, energy supply centre, office building, parking

ATEKO a.s., Hradec Králové

3-PR-7078

Příloha P.10



Model - pohled jižní



- » **DGS Druckguss Systeme, Liberec, CZ, a study**
- » - *expansion of existing production area producing aluminum conventional parts for automotive*
- » - *expansion includes new production hall for structural*
- » *parts, storage with shipping area, parking area and office building*



## » Ljunghall, Čáslav, CZ

- » - *expansion of existing manufacturing area for aluminium parts, automotive industry*
- » - *machining and storage equipment installations*



## » WIKOW GEAR, Plzeň, CZ

- » - *expansion of existing gearbox development centre and test range*
- » - *upgrade includes new crane installation, air conditioning system, oil cooling and filtration system, safety enhancement modification, new operations control centre (crew room)*





## » DPOV, Nymburk, CZ

» - *renewal of an existing railway paint shop*

» - *brand new technology installed*





## » CZ LOKO, Česká Třebová, CZ, a study

» - brand new railway wheel-sets maintenance centre

» - brand new hall, moving areas, road connection



*Thank you for your attention*

<http://www.ateko.cz>

[ateko@ateko.cz](mailto:ateko@ateko.cz)

